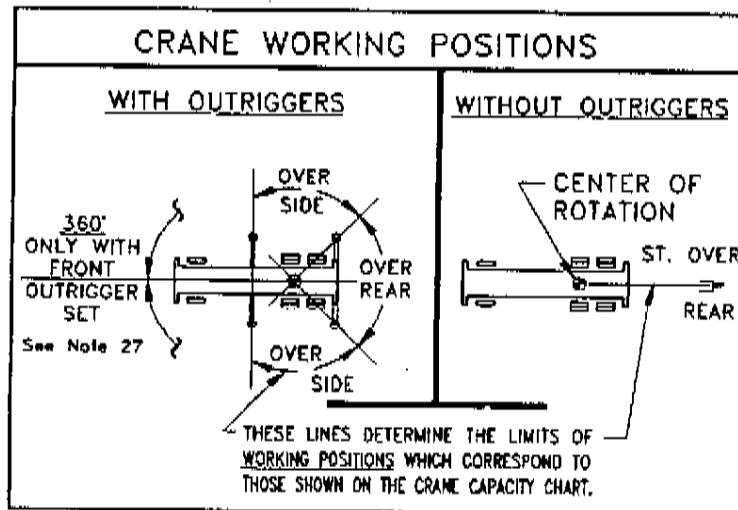
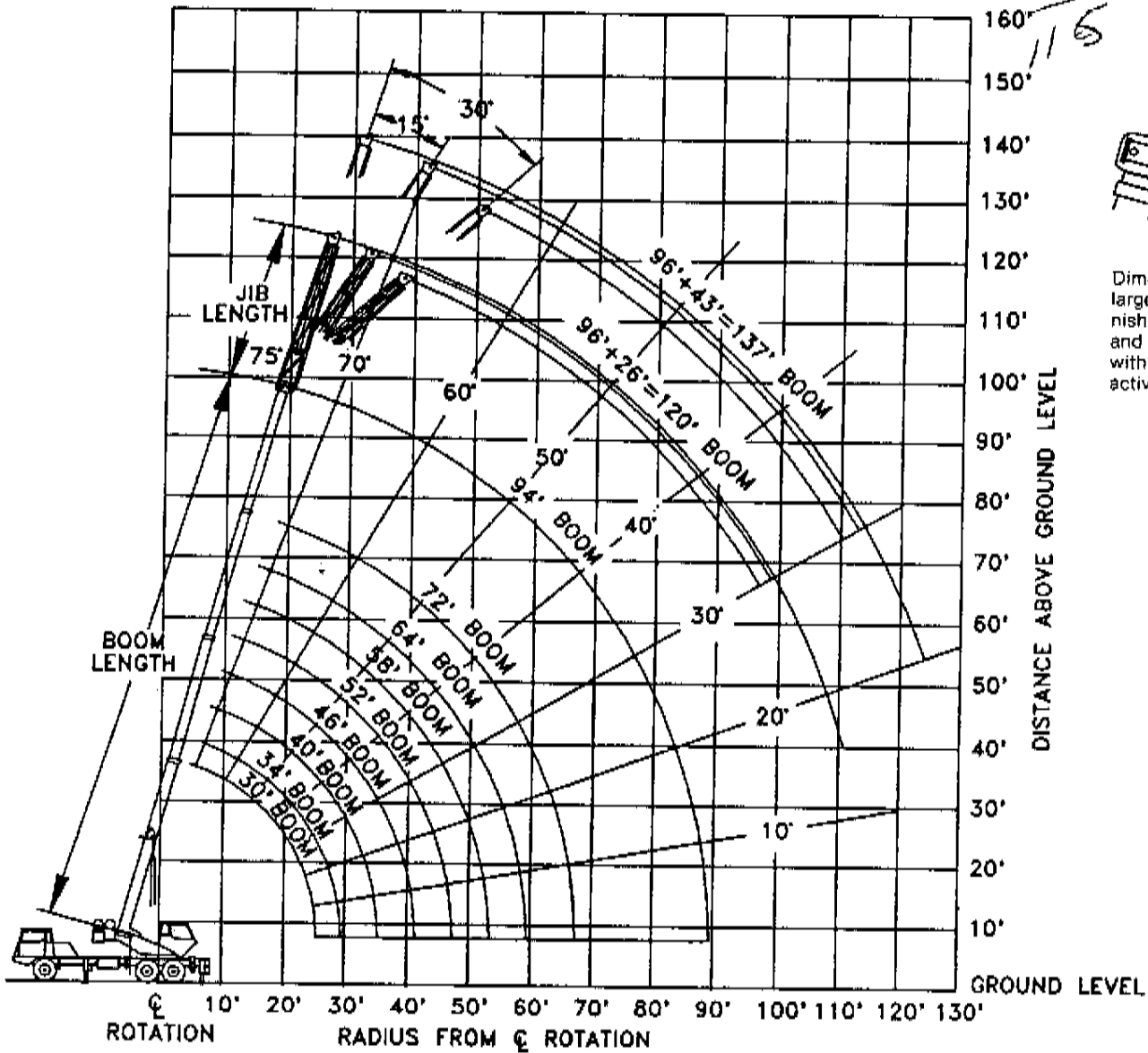


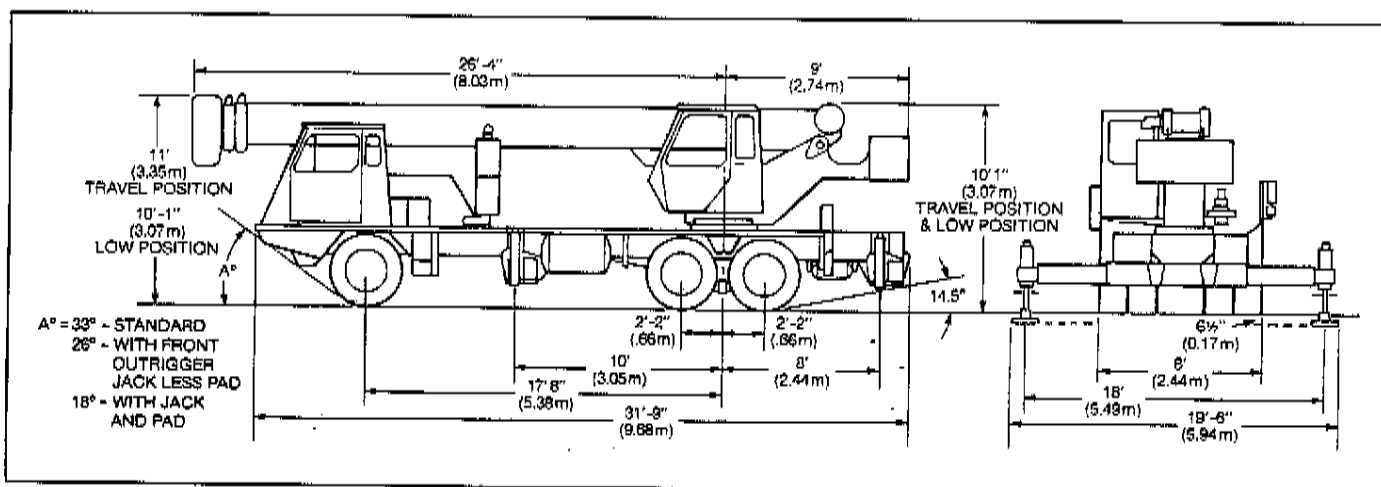
Range Diagram (30'-94' boom)

MAIN CRANE

72
47



GENERAL DIMENSIONS



WEIGHTS & AXLE LOADS	GROSS WEIGHT LBS.	UPPER IN TRAVEL POSITION		GROSS WEIGHT KG.	UPPER IN TRAVEL POSITION	
		FRONT	REAR		FRONT	REAR
Basic Crane with 8.2T Engine, 72' (22.19 m) Boom, 3600 lb. (1633 kg) Counterweight, 16.5 x 22.5 Front Tires, 9.00 x 20 Rear	46,130	13,823	32,307	20,925	6,270	14,654
Add Options:						
94' (28.78 m) Boom	+ 1,105	+ 660	+ 445	+ 501	+ 299	+ 202
26' (7.92 m) Swing-on Jib (Stowed)	+ 850	+ 560	+ 290	+ 386	+ 254	+ 132
26'-43' (7.92-13.10 m) Swing-on Jib (Stowed)	+1,150	+ 774	+ 376	+ 522	+ 351	+ 171
Auxiliary Boom Head	+ 100	+ 180	- 80	+ 45	+ 82	- 36
22 ton (20.0 mt) Hook Block (On Front Bumper - 3 Sheave)	+ 360	+ 508	- 148	+ 163	+ 230	- 67
Auxiliary Winch with Wire Rope	0	0	0	0	0	0
Hydraulic Oil Cooler	+ 190	+ 202	- 12	+ 86	+ 92	- 5
Pintle Hook (Rear)	+ 50	- 26	+ 78	+ 23	- 12	+ 34
Mechanical House Lock	+ 85	0	+ 85	+ 39	0	+ 39
Heater/Defroster (Upper)	+ 60	- 10	+ 50	+ 27	- 5	+ 23
60 Gal. (227 l) Diesel Fuel	+ 420	+ 162	+ 258	+ 191	+ 73	+ 117
10.00 x 20 Tires (Rear Only) Highway Tread	+ 144	0	+ 144	+ 65	0	+ 65
3208T Cat. Engine	+ 310	+ 274	+ 36	+ 141	+ 124	+ 16
7200 lb. (3266 kg) Counterweight on Cab Upper						
1500 lb. (680 kg) Counterweight on Front Bumper	+5,100	+ 263	+4,837	+ 2313	+ 119	+ 2194
30 ton (27.2 mt) Hook Block (On Bumper - 4 Sheave)	+ 427	+ 557	- 130	+ 194	+ 253	- 59
Front Outrigger Jack (w/Pad)	+ 438	+ 528	- 90	+ 199	+ 239	- 41
Front Pump Drive	0	+ 130	- 130	0	+ 59	- 59
18 ton (16.3 mt) Hook Block (On Bumper - 2 Sheave)	+ 330	+ 466	- 136	+ 150	+ 211	- 62
Electric Remote Control	+ 200	+ 100	+ 100	+ 91	+ 45	+ 45

NOTE: Weights are for Lorain supplied equipment and subject to 2% variation due to manufacturing tolerances.

WE RESERVE THE RIGHT TO AMEND THESE SPECIFICATIONS AT ANY TIME WITHOUT NOTICE. THE ONLY WARRANTY APPLICABLE IS OUR STANDARD WRITTEN WARRANTY APPLICABLE TO THE PARTICULAR PRODUCT AND SALE. WE MAKE NO OTHER WARRANTY, EXPRESSED OR IMPLIED.

HOBBS EQUIPMENT COMPANY
1327 FOSTER AVENUE
NASHVILLE, TENNESSEE 37210
(615) 244-4933



Koehring Cranes & Excavators
Waverly, Iowa 50677

Capacity Charts — Pounds (30'-94' boom and heavy-lift package)

MODEL MCH 275D

COUNTERWEIGHT
LOWER CHASSIS ON FRONT
BUMPER 1500 lb.
UPPER STRUCTURE
W/AUX. WINCH 6100 lb.
W/O AUX. WINCH 7200 lb.

BOOM LENGTH 30-94 ft.
OUTRIGGER SPREAD 18 ft.
STABILITY PCT.
ON OUTRIGGERS 85%
ON TIRES 75%
PCSA CLASS 10-B8

IMPORTANT: This specification sheet is not to be used as load rating chart in the machine as data may be subject to change.

141 Boom

BOOM ANGLE	ON OUTRIGGERS																		
	BOOM LENGTH 30'		BOOM LENGTH 34'		BOOM LENGTH 40'		BOOM LENGTH 46'		BOOM LENGTH 52'		BOOM LENGTH 58'		BOOM LENGTH 64'		BOOM LENGTH 72'		BOOM LENGTH 84'(1)		
	REAR	SIDE	REAR	SIDE	REAR	SIDE	REAR	SIDE	REAR	SIDE	REAR	SIDE	REAR	SIDE	REAR	SIDE	REAR	SIDE	
10	55,000	55,000	48,300	48,300	44,300	44,300	44,800	44,800											
12	48,000	45,000	43,500	43,500	41,500	41,500	40,100	40,100	38,900	38,900									
15	37,100	37,100	37,300	37,300	34,700	34,700	34,700	34,700	33,800	33,800	32,700	32,700							
20	26,200	26,200	26,400	26,400	24,800	24,800	24,800	24,800	24,800	24,800	24,800	24,800	24,800	24,800	24,800	24,800	24,800	24,800	24,800
25	18,500	18,500	19,800	19,800	20,000	20,000	20,100	20,100	20,200	20,200	20,300	20,300	20,400	20,400	20,400	20,400	20,400	20,400	20,400
30			15,800	15,800	15,800	15,800	15,800	15,800	15,800	15,800	15,800	15,800	15,800	15,800	15,800	15,800	15,800	15,800	15,800
35					11,200	11,200	11,200	11,200	11,200	11,200	11,200	11,200	11,200	11,200	11,200	11,200	11,200	11,200	11,200
40							8,800	8,800	8,800	8,800	8,800	8,800	8,800	8,800	8,800	8,800	8,800	8,800	8,800
45									8,800	8,800	8,800	8,800	8,800	8,800	8,800	8,800	8,800	8,800	8,800
50											7,200	7,200	7,200	7,200	7,200	7,200	7,200	7,200	7,200
55													5,500	5,500	5,500	5,500	5,500	5,500	5,500
60															4,400	4,400	4,400	4,400	4,400
65																	3,500	3,500	3,500
70																		2,700	2,700
75																			2,000
80																			1,800
85																			1,600

(1) FOR BOOM LENGTHS LESS THAN MAXIMUM WITH THE PULLOUT 4TH SECTION EXTENDED, THE RATED LOADS ARE DETERMINED BY BOOM ANGLE ONLY IN THE 84 FT. BOOM LENGTH COLUMN. FOR BOOM ANGLES NOT SHOWN, USE THE CAPACITY OF THE NEXT LOWER BOOM ANGLE.

ON TIRES STRAIGHT OVER REAR ONLY		
RADIUS	PICK & CARRY MAIN BOOM CAPACITIES	RADIUS
10	13,900	10
12	12,400	12
15	9,900	15
20	6,700	20
25	4,300	25
30	2,800	30
35	1,700	35
40	1,100	40

SIDE STOW JIB ON OUTRIGGERS																	
26' OFFSET JIB									43' OFFSET JIB								
0' OFFSET		15' OFFSET		30' OFFSET		45' OFFSET		60' OFFSET		0' OFFSET		15' OFFSET		30' OFFSET		45' OFFSET	
PULLOUT 4TH SECTION RET.	PULLOUT 4TH SECTION EXT.	PULLOUT 4TH SECTION RET.	PULLOUT 4TH SECTION EXT.	PULLOUT 4TH SECTION RET.	PULLOUT 4TH SECTION EXT.	PULLOUT 4TH SECTION RET.	PULLOUT 4TH SECTION EXT.	PULLOUT 4TH SECTION RET.	PULLOUT 4TH SECTION EXT.	PULLOUT 4TH SECTION RET.	PULLOUT 4TH SECTION EXT.	PULLOUT 4TH SECTION RET.	PULLOUT 4TH SECTION EXT.	PULLOUT 4TH SECTION RET.	PULLOUT 4TH SECTION EXT.	PULLOUT 4TH SECTION RET.	PULLOUT 4TH SECTION EXT.
RAD. (REF)	SIDE	RAD. (REF)	SIDE	RAD. (REF)	SIDE	RAD. (REF)	SIDE	RAD. (REF)	SIDE	RAD. (REF)	SIDE	RAD. (REF)	SIDE	RAD. (REF)	SIDE	RAD. (REF)	SIDE
70	25.0	12,000	22.5	7,000	30.0	7,000	37.5	3,100	41.0	3,000	47.5	3,000	54.0	2,400	61.0	2,400	67.5
72	25.0	11,000	24.0	6,000	32.5	6,000	40.0	2,800	43.5	2,800	50.0	2,200	56.5	2,000	63.0	2,000	69.5
75	25.0	10,200	25.0	5,500	35.0	5,500	42.5	2,700	46.0	2,700	52.5	2,100	59.0	1,900	65.0	1,900	71.5
80	25.0	9,100	26.0	5,000	37.5	5,000	45.0	2,600	48.5	2,600	55.0	2,000	61.0	1,800	67.0	1,800	73.5
85	25.0	8,200	27.0	4,500	40.0	4,500	47.5	2,500	51.0	2,500	57.5	1,900	63.0	1,700	69.0	1,700	75.5
90	25.0	7,500	28.0	4,000	42.5	4,000	50.0	2,400	53.5	2,400	60.0	1,800	65.0	1,600	71.0	1,600	77.5
95	25.0	7,000	29.0	3,500	45.0	3,500	52.5	2,300	56.0	2,300	62.5	1,700	67.0	1,500	73.0	1,500	79.5
100	25.0	6,500	30.0	3,000	47.5	3,000	55.0	2,200	58.5	2,200	65.0	1,600	69.0	1,400	75.0	1,400	81.5
105	25.0	6,000	31.0	2,500	50.0	2,500	57.5	2,100	61.0	2,100	67.5	1,500	71.0	1,300	77.0	1,300	83.5
110	25.0	5,500	32.0	2,000	52.5	2,000	60.0	2,000	63.5	2,000	70.0	1,400	73.0	1,200	79.0	1,200	85.5
115	25.0	5,000	33.0	1,500	55.0	1,500	62.5	1,900	66.0	1,900	72.5	1,300	75.0	1,100	81.0	1,100	87.5
120	25.0	4,500	34.0	1,000	57.5	1,000	65.0	1,800	68.5	1,800	75.0	1,200	77.0	1,000	83.0	1,000	89.5
125	25.0	4,000	35.0	500	60.0	500	67.5	1,700	71.0	1,700	77.5	1,100	79.0	900	85.0	900	91.5
130	25.0	3,500	36.0	500	62.5	500	70.0	1,600	73.5	1,600	80.0	1,000	81.0	800	87.0	800	93.5
135	25.0	3,000	37.0	500	65.0	500	72.5	1,500	76.0	1,500	82.5	900	83.0	700	89.0	700	95.5
140	25.0	2,500	38.0	500	67.5	500	75.0	1,400	78.5	1,400	85.0	800	85.0	600	91.0	600	97.5
145	25.0	2,000	39.0	500	70.0	500	77.5	1,300	81.0	1,300	87.5	700	87.0	500	93.0	500	99.5
150	25.0	1,500	40.0	500	72.5	500	80.0	1,200	83.5	1,200	90.0	600	89.0	400	95.0	400	101.5
155	25.0	1,000	41.0	500	75.0	500	82.5	1,100	86.0	1,100	92.5	500	91.0	300	97.0	300	103.5
160	25.0	500	42.0	500	77.5	500	85.0	1,000	88.5	1,000	95.0	400	93.0	200	99.0	200	105.5
165	25.0	500	43.0	500	80.0	500	87.5	900	91.0	900	97.5	300	95.0	100	101.0	100	107.5
170	25.0	500	44.0	500	82.5	500	90.0	800	93.5	800	100.0	200	97.0	100	103.0	100	109.5
175	25.0	500	45.0	500	85.0	500	92.5	700	96.0	700	102.5	100	99.0	100	105.0	100	111.5
180	25.0	500	46.0	500	87.5	500	95.0	600	98.5	600	105.0	100	101.0	100	107.0	100	113.5
185	25.0	500	47.0	500	90.0	500	97.5	500	101.0	500	107.5	100	103.0	100	109.0	100	115.5
190	25.0	500	48.0	500	92.5	500	100.0	400	103.5	400	110.0	100	105.0	100	111.0	100	117.5
195	25.0	500	49.0	500	95.0	500	102.5	300	106.0	300	112.5	100	107.0	100	113.0	100	119.5
200	25.0	500	50.0	500	97.5	500	105.0	200	108.5	200	115.0	100	109.0	100	115.0	100	121.5

RECOMMENDED TIRE PRESSURE (PSI)		
TIRE SIZE	8.00X20, 10PR	10.00X20, 12PR
LIFT ON TIRES	80	85
ROADING	70	75

Notes for Jib Capacities:

- F. For all boom lengths less than the maximum with a jib erected, the rated loads are determined by boom angle only in the appropriate column.
- G. For boom angles not shown, use the capacity of the next lower boom angle.
- H. Listed radii are for fully extended main boom only.

MAXIMUM PERMISSIBLE HOIST LINE LOAD								
LINE PARTS	1	2	3	4	5	6	7	8
MAX. LOAD	7,800	13,700	22,800	30,400	38,000	45,900	53,700	55,000
BOOM HEAD	2	3-0	2-2	1-2-0				
HOOK BLOCK	0	2	2-0	1-2	1-2-0	1-2-3	2-3-0	2-3-4

WIRE ROPE: 6 X 19 OR 6 X 27 CLASS, 26,000 LB. MINIMUM BREAKING STRENGTH.
1/2" DIAMETER, L.P.S., I.W.R.C., PREFORMED.
3/8" DIAMETER, L.P.S., I.W.R.C., PREFORMED.
3/8" DIAMETER, P.S., I.W.R.C., PREFORMED.

Notes for On Tire Capacities:

- A. For Pick and Carry operation, boom must be centered over the rear of the crane with swing brake locked or with mechanical swing lock engaged, if crane is so equipped. Use minimum boom point height and keep load close to ground surface.
- B. The load should be restrained from swinging. No On Tires Operation With Jib Erected.
- C. Without outriggers, never maneuver the boom beyond listed load radii for applicable tires used to ensure stability.
- D. Creep speed is crane movement of less than 200 ft. (61 m) in a 30 minute period and not exceeding 1.0 mph (1.6 km/h).
- E. Refer to General Notes for additional information.

REDUCTION IN MAIN BOOM CAPACITY	
ALL JIBS IN STOWED POSITION	0 Lbs.
26'-43' OFFSET JIB STINGER RETRACTED	2,080 Lbs.
26'-43' OFFSET JIB STINGER EXTENDED	2,375 Lbs.
'HOOK BLOCK WEIGHTS	
HOOK & BALL	121 Lbs.
HOOK BLOCK (2 SHEAVE)	330 Lbs.
HOOK BLOCK (3 SHEAVE)	360 Lbs.
HOOK BLOCK (4 SHEAVE)	427 Lbs.